



**Chesewater Wildlife Group**

# **Chesewater's Birds**



**2003**

## THE BIRDS OF CHASEWATER - 2003

This is a complete checklist of all the species and distinct sub-species that were recorded during 2003. Regular observations started in 1948 and the records for the last 56 years have been summarised at the start of each species account.

- The annual occurrence of scarcer species for the first 46 years since 1948 is shown either precisely or as a ratio. Records for the last ten years are shown in bold print. Dates in italics refer to records where the bird(s) arrived one year but stayed into the new year. For the less rare species and those known to be undergoing a change of status (e.g. Tree Sparrow) only data since 1994 is given.
- An asterisk refers to where the record is known to be incomplete. All additional records would be greatly appreciated but claims of rarities need to be supported by a written description and accepted by the Records Committee of the West Midland Bird Club.
- The highest daily count, with date, is also recorded. These maxima can refer to either a single flock, perhaps passing overhead, or an aggregate count of individuals seen or (in the case of breeding birds) known to be present in one day.
- The main status of each species is described.
- The tables show the maximum daily count for each month in 2003; a zero is used where it was reasonably certain that no birds occurred during the month, a dash (-) is used if it was likely that birds were present but the data is not available and a cross (X) if no count was made but birds were present. In some cases the total may refer to the number of singing birds but with no assumption made regarding the presence of mates.
- The details of 2003 records are given and for rare species, where a supporting description is required, the record is followed by the observer's initials. The names of these observers are given at the end of the classified list. If you find an unusual bird, always make a field description of it and report it to other members of the Chasewater Wildlife Group, preferably before it goes!

All records are for the main recording area of Chasewater unless otherwise stated. This area is shown on the map and can be summarised as the area bordered by Burntwood, Norton Canes and the Cannock / Lichfield Road in the north and Brownhills West, the Whitehorse Estate and Watling Street in the south. It includes the wetland area of No Man's Bank, the fields around Willow Vale and those adjacent to the Anglesey Basin. Those marked **CB** are for Cuckoo Bank (including Biddulph's Pool) and an increase in records from this area would be appreciated.

**Mute Swan** *Cygnus olor*

**150** 7-1-51

*A resident breeder.*

J	F	M	A	M	J	J	A	S	O	N	D
48	69	68	68	68	62	82	100	98	68	51	47

Pairs nested on the Dam Pool (2FX, 7JJ, four cygnets hatched), Boating Pool (six cygnets), Powerboat Club (nine cygnets), Jeffrey's Swag (SNX, eight cygnets), Slurry Pool (one cygnet) and Plant Swag (six cygnets). The Plant Swag pair, with its surviving two cygnets took up residence on the Slurry Pool after the nesting pair lost their one cygnet and moved to the lake. The old pair at Fly Pool (CIL, S94) nested without success and unfortunately CIL died in August. Another pair built a nest at Target Point during April but it was soon abandoned.

**Whooper Swan** *Cygnus cygnus*

49, 57, 74, 76, 82, 85, 86, 90, **97, 01, 02, 03**

**4** 3/19-2-82 , 11-11-85 & 1-1-97

*A very scarce and irregular winter visitor.*

Two were present on November 6<sup>th</sup> (GR).

**Greylag Goose** *Anser anser*

82, 86, 88, 89, 90, 93, **95, 96, 97, 98, 99, 01, 02, 03**

**6** 25-10-98

*An increasingly frequent visitor.*

One on April 15<sup>th</sup> and two on June 7<sup>th</sup> were the only records.

**Canada Goose** *Branta canadensis*

**444** 6-9-03

*Resident but peak numbers occur in the autumn. It unsuccessfully nested in 1995 but reared young in 1996, 1997, 2001, 2002 and 2003.*

J	F	M	A	M	J	J	A	S	O	N	D
123	85	32	30	47	108	77	317	444	164	125	79

Pairs hatched young on the Slurry Pool and Boating Pool island. On June 9<sup>th</sup> an influx of geese on the south shore included a very small bird thought to be a Cackling Goose *B. c. minima* x Barnacle Goose hybrid, two Barnacle Geese and 108 Canada Geese.

**Canada x Greylag Goose**

Four were present in October, November and December.

**Barnacle Goose** *Branta leucopsis*

81, **97, 98, 99, 00, 01, 03**

**13** 17-6-00

Although parties of eight on March 17<sup>th</sup> 1981 and March 21<sup>st</sup> 2003 possibly involved wild birds, most records probably refer to feral birds.

On March 21<sup>st</sup> a party of eight was on the lake until flying off to the north-east at 18.30 hrs. Two occurred on June 9<sup>th</sup> accompanied by a Barnacle x Cackling Goose hybrid.

**Common Shelduck** *Tadorna tadorna*

38:46 **94, 95, 96, 97, 98, 99, 00, 01, 02, 03**

**27** 29-11-69

*A regular visitor in small numbers.*

J	F	M	A	M	J	J	A	S	O	N	D
4	4	0	2	0	0	0	2	1	0	0	0

Four on January 6<sup>th</sup>, February 1<sup>st</sup>, two on April 12<sup>th</sup>, two on August 26<sup>th</sup> and one on September 3<sup>rd</sup>.

**Eurasian Wigeon** *Anas enelope*

**254** 12-10-02

*A regular autumn and winter visitor in increasing numbers.*

J	F	M	A	M	J	J	A	S	O	N	D
70	17	47	9	0	0	0	0	9	225	136	176

An impressive flock again occurred during the autumn with a peak count of 225 on October 23<sup>rd</sup>.

**Gadwall** *Anas strepera*

25:46 **94, 95, 96, 97, 98, 99, 00, 01, 02, 03**

**16** ?-1-93

*A regular non-breeding visitor.*

J	F	M	A	M	J	J	A	S	O	N	D
2	2	4	1	0	0	0	0	2	3	5	7

**Eurasian Teal** *Anas crecca*

**112** 31-1/ 1-2-87

*A regular non-breeding visitor.*

J	F	M	A	M	J	J	A	S	O	N	D
8	12	13	32	0	0	0	4	22	23	19	11

**Mallard** *Anas platyrhynchos*

**553** 24-8-03

*A resident breeder. Many of the resident birds exhibit varying degrees of domestication the most profound of these (Indian Runners, Aylesbury Ducks etc) are not included in the totals.*

J	F	M	A	M	J	J	A	S	O	N	D
---	---	---	---	---	---	---	---	---	---	---	---

202 144 107 104 136 190 235 553 441 354 165 186  
 Several pairs raised young. Record numbers were recorded during the autumn with the peak count being 553 on August 24<sup>th</sup>.

**Northern Pintail** *Anas acuta*

23:46 **95, 97, 98, 99, 00, 02, 03**

**32** 20-12-50

*A fairly regular winter visitor in very small numbers.*  
 A female or immature was present on October 18<sup>th</sup>.

**Garganey** *Anas querquedula*

53, 54, 56, 76, 78, 87, 89, 90, 91, 92, **95, 97, 01, 03**

**3** 11/12-5-90

*An irregular passage migrant.*  
 A drake was on Jeffrey's Swag on April 24<sup>th</sup>.

**Shoveler** *Anas clypeata*

**42** 17-12-78

*A regular non-breeding visitor in small numbers.*

J	F	M	A	M	J	J	A	S	O	N	D
4	2	4	2	0	0	0	0	1	3	0	0

Very scarce in the second half of the year with no records in November and December.

**Common Pochard** *Aythya ferina*

**350** 18/19-12-57 & 27-11-65

*A regular non-breeding visitor.*

J	F	M	A	M	J	J	A	S	O	N	D
131	113	29	1	0	0	0	1	12	75	72	52

**Tufted Duck** *Aythya fuligula*

**1204** 1-10-03

*A common autumn and winter resident, rarely nesting. Winter numbers have been of national importance for the last decade.*

J	F	M	A	M	J	J	A	S	O	N	D
213	130	75	82	21	69	187	412	890	<b>1204</b>	769	694

Although birds were present throughout the summer there was no evidence of nesting. Record numbers during the autumn raised the five-year average maxima to 931, which maintains the site's status as one of national importance for Tufted Ducks despite the required five-year average being raised from 600 to just over 900.

**Greater Scaup** *Aythya marila*

30:46 **94, 95, 96, 97, 98, 99, 00, 01, 02, 03**

11 8-12-57

*A regular winter visitor in very small numbers.*

J	F	M	A	M	J	J	A	S	O	N	D
1	2	1	0	0	0	0	0	0	1	1	1

A duck was present from the start of the year until March 9<sup>th</sup>. Interest in this bird was heightened on January 26<sup>th</sup> when there were claims of it being a Lesser Scaup *Aythya affinis* but although it was rather small, all other features pointed to it being *A. marila*. It was joined by a male on February 25<sup>th</sup>. An adult male was present on October 4<sup>th</sup> and a first-winter male was recorded from November 29<sup>th</sup> to December 21<sup>st</sup>.

### **Aythya Hybrids**

A probable male Tufted x Greater Scaup was present from October 6<sup>th</sup> to the end of the year. It showed characteristics similar to a Lesser Scaup, especially when in eclipse plumage, although the grey vermiculations on the scapulars were too dense and dark and the black on the bill tip extended slightly beyond the nail and was bordered by a pale band. As it moulted into full plumage the slight 'bump' on the rear crown developed into a very prominent and dense 'tuft' and the flanks became pure white. What was probably this bird was also recorded on March 12<sup>th</sup> when it was in first-winter plumage.

### **Common Scoter** *Melanitta nigra*

36:46 94, 95, 96, 97, 98, 99, 00, 01, 02, 03

20 5-5-69 & 11-11-84

*A regular passage migrant.*

A good passage of adults occurred during the summer with six drakes present on June 27<sup>th</sup> and 10 drakes and two ducks on July 8<sup>th</sup>. A single drake was present on August 18<sup>th</sup>.

### **Common Goldeneye** *Bucephala clangula*

175 13-12-98

*A common winter visitor.*

J	F	M	A	M	J	J	A	S	O	N	D
130	128	121	22	0	0	0	0	0	47	108	153

### **Smew** *Mergellus albellus*

55, 56, 59, 75, 76, 77, 78, 79, 83, 85, 87, 91, 94, 95, 96, 97, 98, 01, 02, 03

3 8/9-12-03

*A scarce but increasing winter visitor.*

An adult male was reported on January 8<sup>th</sup> and then again on February 1<sup>st</sup> to March 2<sup>nd</sup>. Two males and a red-head were present from December 8<sup>th</sup> to 17<sup>th</sup> with one of the males and the red-head remaining to the end of the year.

### **Red-breasted Merganser** *Mergus serrator*

56, 70, 71, 74, 75, 76, 83, 84, 87, **94, 96, 98, 99, 03**

**5** 17/19-2-56

*A very scarce passage migrant or winter visitor.*

An eclipse male on October 14<sup>th</sup> associated throughout the day with a Slavonian Grebe (GE). Two immatures occurred on November 11<sup>th</sup> (GE et al), one on the 12<sup>th</sup> and two again on the 15<sup>th</sup> (CM).

**Goosander** *Mergus merganser*

28:46 **94, 95, 96, 97, 98, 99, 00, 01, 02, 03**

**77** 31-12-96

*Formerly scarce but now a regular winter visitor.*

J	F	M	A	M	J	J	A	S	O	N	D
12	14	10	0	0	0	0	0	0	1	2	14

**Ruddy Duck** *Oxyura jamaicensis*

**72** 7-1-79

*A scarce resident with the small numbers during the autumn and winter likely to be reduced by the effects of the regional cull.*

J	F	M	A	M	J	J	A	S	O	N	D
2	11	1	4	5	3	1	2	4	11	6	2

**Red-legged Partridge** *Alectoris rufa*

**96, 97, 01, 02, 03**

**12** autumn 68

*Once regular but now rarely recorded.*

One was noted near the Chasewater Heaths station on August 11<sup>th</sup>.

**Grey Partridge** *Perdix perdix*

**36** 7-9-88

*A former resident breeder that has recently become very scarce. National decline of 84% (1970-98) and 27% (1993-98).*

Singles were noted in March and June but Cuckoo Bank remains the only area where this species can be seen with any frequency; up to seven were recorded in January, February and December, 10 in November and two in April.

**Common Pheasant** *Phasianus colchicus*

**4** 30-7-93

*An erratically recorded resident.*

A male called frequently in the breeding season near Willow Vale.

One pair bred on Cuckoo Bank.

**Great Northern Diver** *Gavia immer*

**1** 48, 52, 54, 55, 56, 59, 60, 75, 84, 89, 90, 91, 92, **00, 02, 03**

*A rare and infrequent winter visitor.*

A juvenile was present from November 10<sup>th</sup> to December 15<sup>th</sup> (many observers).

**Little Grebe** *Tachybaptus ruficollis*

**31** 20-9-84

*A resident breeder and autumn visitor. No more than one pair bred each year during the 1990's and none at all during 1995-96 but there have been signs of a recent revival.*

	F	M	A	M	J	J	A	S	O	N	D	
J	1	2	6	6	4	4	5	6	5	6	5	5

Calling birds were noted in April at Jeffrey's Swag, North shore and Fly Pool (possibly two pairs).

**Great Crested Grebe** *Podiceps cristatus*

**74** 7-11 / 6-12-98

*A resident breeder.*

J	F	M	A	M	J	J	A	S	O	N	D
17	17	17	16	28	28	29	37	12	40	17	22

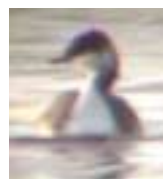
Pairs nested at the Nine-foot, South Shore, Powerboat Club, North Bay, Fly Pool, Jeffrey's Swag (3 pairs) and other pairs at least were present on the South Shore (2), the Sailing Shore, Island, Slurry Pool and Fly Bay.

**Slavonian Grebe** *Podiceps auritus*

**1** 49, 57, 59, 70, 83, 85, 87, **94, 96, 98, 02, 03**

*A rare but increasing winter visitor.*

One on October 14<sup>th</sup> (GE) associated throughout the day with a Red-breasted Merganser.



Slavonian Grebe with Red-breasted Merganser and Great Crested Grebes 14<sup>th</sup> October 2003 (video grabs Graham Evans)

**Black-necked Grebe** *Podiceps nigricollis*

49, 66, 68, 70, 73, 74, 83, 85, 88, **97, 98, 00, 03**

**2** 29-1-85, 2-4-88 & 12-5-00

*A very infrequent passage migrant.*

Two were reported on September 12<sup>th</sup>

**Great Cormorant** *Phalacrocorax carbo*

**144** 7-11-98

*A regular winter visitor and passage migrant.*

J	F	M	A	M	J	J	A	S	O	N	D
41	28	7	5	1	1	1	11	8	14	22	35

**Little Egret** *Egretta garzetta*

**99, 01, 03**

**4** 16-8-03

*A rare but increasing visitor.*

One was present from August 15<sup>th</sup> to September 19<sup>th</sup> (GE et al) although there were times when it could not be found which could account for the appearance of one at Clayhanger Marsh on the 23<sup>rd</sup>. Three flew east over No Man's Bank on August 16<sup>th</sup> (JJH) giving a total of four for the day.

**Grey Heron** *Ardea cinerea*

**8** 12-12-98 & 26-12-99

*Formerly very infrequent but now small numbers are regularly present.*

J	F	M	A	M	J	J	A	S	O	N	D
1	1	3	1	2	3	2	7	7	5	5	3

**Eurasian Sparrowhawk** *Accipiter nisus*

**5** 11-8-03

*A resident breeder.*

Nested near the Vicarage garden with five young present in early August. Other young birds were noted calling in August at Plant Swag, Fly Bay and the Jeffrey's Swag/ Slurry Pool area, implying the possibility of up to four pairs

**Common Buzzard** *Buteo buteo*

66, 75, 78, 84, 87, 88, 92, 93, **96, 97, 98, 99, 00, 01, 02, 03**

**4** 26-9-99

**9** 12-8-03 **(CB)**

*Formerly very scarce but it is now becoming a regular sight particularly over Cuckoo Bank where a pair nested in 2002 Up to three pairs now nest within a two mile radius. National increase of 350% (1970-98).*

Combined Chasewater and Cuckoo Bank monthly maxima:

J	F	M	A	M	J	J	A	S	O	N	D
	1	4	4	1	1	2	9	1	2	1	

From August 22<sup>nd</sup> to 25<sup>th</sup> a juvenile bird frequented Highfield Farm where it sat on fence posts and on the ground appearing to feed on small invertebrates.

**Osprey** *Pandion haliaetus*

*An increasing passage migrant with several unsubstantiated reports in recent years as well as those recorded below.*

**1** 23 & 30-6-72, 13-9-**95**, 7-10-**95**, 28-3-**98**, 24-3-**99**, 25-9-**99**, 2-4-**00**, 2-9-**00**, 5-5-**03**

One passed over on May 5<sup>th</sup> (ICW).

**Common Kestrel** *Falco tinnunculus*

**4** 12-10-85 & 9-7-97

*A resident breeder.*

J	F	M	A	M	J	J	A	S	O	N	D
1	1	2	4	2	1	2	3	1	1	1	1

Probably nested around the north shore warehouse area.

Nested near Biddulph's Pool with up to three recorded at Cuckoo Bank.

**Merlin** *Falco columbarius*

**1** 22:46 **97, 03**

**CB 1** 5-10-01

*Once a fairly regular winter visitor but now rarely recorded.*

On March 15<sup>th</sup> an immature male flew over Highfield Farm towards Brownhills Common (CM).

**Hobby** *Falco subbuteo*

67, 72, 83, 84, 85, 86, 87, 88, 89, 90, 91, 92, 93, **94, 95, 96, 97, 98, 99, 00, 01, 02, 03**

**2** 8-9-88 & 12-5-93

**4** 8-9-03 (**CB**)

*Formerly very rare but now a regular summer migrant.*

First recorded on May 17<sup>th</sup>. An adult was hunting over the north heath on July 29<sup>th</sup>.

One was at Cuckoo Bank on August 12<sup>th</sup>, four on September 8<sup>th</sup> and one on the 21<sup>st</sup>.

**Peregrine Falcon** *Falco peregrinus*

56, 83, 88, **95, 96, 98, 99, 00, 01, 02, 03**

**2** 2-10-83

**2** 11-10-01 (**CB**)

*A rare but increasing visitor.*

Singles were present on April 19<sup>th</sup> and September 30<sup>th</sup>.

One was at Cuckoo Bank on October 19<sup>th</sup>.

**Water Rail** *Rallus aquaticus*

68, 71, 72, 73, 74, 83, 84, 85, 86, 87, **95, 97, 98, 99, 00, 01, 02, 03**

**4** 4-3-72 & 8-83

*A scarce winter visitor, has bred.*

The only record was of a bird at Fly Pool on January 1<sup>st</sup>.

**Moorhen** *Gallinula chloropus*

**62** 11-03

*A resident breeder.*

J	F	M	A	M	J	J	A	S	O	N	D
4	6	5	3	20	20	20	20	21	45	62	46

Ten pairs were located during the breeding season. Low water-levels during the autumn allowed for more careful scrutiny than usual, resulting in record counts. Prime sites were Jeffrey's Swag (20), North Bay (11), Fly Pool (17) and Powerboat Bay (9) and a record total of 62 in November.

**Common Coot** *Fulica atra*

**1113** 10-10-99

*A common resident breeder.*

J	F	M	A	M	J	J	A	S	O	N	D
478	268	163	142	121	96	420	652	789	888	967	727

High water levels during the spring and early summer encouraged at least 48 nesting attempts with concentrations of ten nests each on Jeffrey's Swag, North Shore and South Shore.

**Oystercatcher** *Haematopus ostralegus*

36:46 **94, 95, 96, 97, 98, 99, 00, 01, 02, 03**

**7** 4-3-79 & 19-3-83

*A regular passage migrant in small numbers.*

J	F	M	A	M	J	J	A	S	O	N	D
0	0	0	0	1	0	0	1	0	0	0	0

Singles occurred on May 14<sup>th</sup>, 27<sup>th</sup> and August 30<sup>th</sup>.

A pair bred at Ryders Mere two miles to the south but the chicks did not fledge.

**Little Ringed Plover** *Charadrius dubius*

**25** 19-7-76

*A regular migrant breeder in small numbers, usually recorded between late March and mid*

*September.*

J	F	M	A	M	J	J	A	S	O	N	D
0	0	1	3	1	1	2	0	0	0	0	0

One on March 9<sup>th</sup> was the first of the year. There was no evidence of local breeding this year.

**Ringed Plover** *Charadrius hiaticula*

**80** 17-8-57

*A regular passage migrant and rare breeder.*

J	F	M	A	M	J	J	A	S	O	N	D
0	0	0	1	2	0	3	4	12	0	0	0

First record for the return passage was of two on July 1<sup>st</sup>. One on July 20<sup>th</sup> to 23<sup>rd</sup>. Four were present on August 30<sup>th</sup> and September 3<sup>rd</sup>.

**European Golden Plover** *Pluvialis apricaria*

**200** 18-4-57

*A regular passage migrant and winter visitor in very variable numbers.*

15 flew over on November 7<sup>th</sup> and 6 on the 13<sup>th</sup>. On December 8<sup>th</sup> 38 flew around and out to the east and about 55 flew west over Highfield Farm on December 31<sup>st</sup>.

At Cuckoo Bank up to 20 were recorded in March and April and two in October.

**Northern Lapwing** *Vanellus vanellus*

**800** 12-96

*A scarce breeder and common winter visitor.*

J	F	M	A	M	J	J	A	S	O	N	D
20	22	25	12	8	20	25	36	107	127	34	93

Four pairs were present at Highfield Farm during May although only one pair hatched young. Also present in the breeding season on Cuckoo Bank.

**Red Knot** *Calidris canutus*

29:46 **95, 96, 98, 99, 01, 02, 03**

**13** 29-9-57

*A frequent autumn passage migrant.*

One was present from October 16<sup>th</sup> to 19<sup>th</sup>.

**Sanderling** *Calidris alba*

35:46 **94, 95, 96, 97, 98, 99, 00, 01, 03**

**25** 1-6-90

*A particularly regular spring migrant.*

One on the south shore on May 25<sup>th</sup> was the only record.

**Little Stint** *Calidris minuta*

26:46 **95, 96, 98, 99, 00, 03**

**17** 24-9-57

*A frequent passage migrant mainly during September.*

Four occurred on September 17<sup>th</sup>.

**Dunlin** *Calidris alpina*

**195** 29-11-91

*A regular passage migrant and frequent winter visitor.*

J	F	M	A	M	J	J	A	S	O	N	D
0	0	0	0	7	0	2	1	4	8	2	0

One on May 7<sup>th</sup> was the first for the year. A party of seven passed through on May 22<sup>nd</sup>. Single adults occurred on July 11<sup>th</sup>, 20<sup>th</sup> and 23<sup>rd</sup>. Despite low water-levels very few were noted during the autumn.

**Ruff** *Philomachus pugnax*

31:46 **95, 96, 98, 99, 00, 03**

**8** 24-8-71

*A fairly regular autumn passage migrant.*

One juvenile was present from September 3<sup>rd</sup> to 12<sup>th</sup>.

**Jack Snipe** *Lymnocyrtus minimus*

**27** 29-10-72

**94, 95, 96, 97, 98, 99, 00, 01, 02, 03**

*A regular winter visitor.*

J	F	M	A	M	J	J	A	S	O	N	D
1	8	9	2	0	0	0	0	0	1	5	3

One or two were also recorded on Cuckoo Bank in January and March.

**Common Snipe** *Gallinago gallinago*

**70** 11-74 & 3-75

*A declining former resident breeder and winter visitor.*

J	F	M	A	M	J	J	A	S	O	N	D
15	17	30	3	0	0	1	3	2	4	9	10

The last spring record was on April 26<sup>th</sup> and there were no further records until one on July 23<sup>rd</sup>.

**Woodcock** *Scolopax rusticola*

**2** 27-1-01

84, 85, 86, 87, 88, 91, 92, **94, 96, 97, 98, 99, 00, 01, 02, 03**

**2** 17-4-93 **(CB)**

*Probably regular during the winter and formerly regularly present during the breeding season at Cuckoo Bank. National decline of 71% (1970-98) as a breeding bird.*

Singles were noted in January, February and March. One flew west over Highfield Farm on November 30<sup>th</sup>.

**Black-tailed Godwit** *Limosa limosa*

66, 72, 77, 79, 85, 86, 87, 90, 93, **95, 96, 99, 01, 03**

**10** 5-7-96

*An infrequent passage migrant.*

One in breeding plumage was on the south shore on May 1<sup>st</sup>. One occurred on July 29<sup>th</sup> and three on August 20<sup>th</sup>.

**Eurasian Curlew** *Numenius arquata*

**94, 95, 96, 97, 98, 99, 00, 01, 02, 03**

**30** 10-9-85

*A regular, but declining, passage migrant in small numbers.*

The only record was of one on April 7<sup>th</sup>.

**Common Redshank** *Tringa totanus*

**95, 96, 97, 98, 99, 00, 01, 02, 03**

**21** 15-8-88

*A regular, but declining, passage migrant. Last known to breed in 1958.*

J	F	M	A	M	J	J	A	S	O	N	D
0	0	0	0	0	0	0	1	2	2	0	0

Singles were present on August 15<sup>th</sup>, 16<sup>th</sup> and September 3<sup>rd</sup>. Two were present on September 25<sup>th</sup> and on October 19<sup>th</sup>.

**Common Greenshank** *Tringa nebularia*

31:46 **94, 95, 96, 98, 99, 00, 01, 02, 03**

**12** 1-9-98

*A regular autumn passage migrant.*

The only record was of one on August 18<sup>th</sup> and 19<sup>th</sup>.

**Common Sandpiper** *Actitis hypoleucos*

45:46 **94, 95, 96, 97, 98, 99, 00, 01, 02, 03**

**24** late 7-82

*A regular passage migrant usually first recorded in early April and departing by late September although it has occasionally wintered.*

J	F	M	A	M	J	J	A	S	O	N	D
0	0	0	2	1	1	7	4	3	0	0	0

The first record of the spring was on April 26<sup>th</sup>. First record for the return passage was on July 1<sup>st</sup>.

**Grey Phalarope** *Phalaropus fulicarius*

**1** 7/9-10-76, 16-10-87, 28-9-88, 9-1-**94**, 13/15-10-**01**, 4-11/5-12-**03**

*A very rare autumn vagrant.*

An adult was present from November 4<sup>th</sup> to December 7<sup>th</sup> (GMH et al). The bird was relocated at Belvide Reservoir on the 12<sup>th</sup> where it stayed until the 21<sup>st</sup>.

**Great Skua** *Catharacta skua*

73, 88, 89, **94, 03**

**5** 14-9-94

*A rare and very infrequent autumn visitor.*

On October 7<sup>th</sup> one was found on the south shore but unfortunately it was in a sick state and died later in the day.

**Mediterranean Gull** *Larus melanocephalus*

73, 74, 75, 76, 86, 87, 88, 89, 91, 92, 93, **94, 95, 96, 97, 98, 99, 00, 02, 03**

**2** 2/4-1-92, 15-1-95, 5-2-95, 14-1-96, 4-1-97

*A rare but regular passage migrant and winter visitor.*

J	F	M	A	M	J	J	A	S	O	N	D
1	1	1	0	0	0	0	0	1	1	1	1

First-winter birds were present on January 18<sup>th</sup>, February 16<sup>th</sup>, 27<sup>th</sup>, March 2<sup>nd</sup>, 5<sup>th</sup>, 6<sup>th</sup>, September 13<sup>th</sup>, 28<sup>th</sup> and October 5<sup>th</sup>. An adult roosted on November 16<sup>th</sup>, 19<sup>th</sup>, 22<sup>nd</sup>, December 8<sup>th</sup> and 16<sup>th</sup>. A second-winter bird roosted on December 13<sup>th</sup>.

**Little Gull** *Larus minutus*

52, 55, 58, 69, 71-74, 77-81, 83-85, 87-91, 93, **94, 95, 96, 97, 98, 99, 00, 01, 02, 03**

**27** 1-5-84

*A regular passage migrant but rare in winter.*

An adult was present on April 15<sup>th</sup> and 16<sup>th</sup>. A second year occurred on the 18<sup>th</sup> and seven on the 19<sup>th</sup> (one first summer, 2 second year and 4 adults) with six (all but one second year) remaining till the 21<sup>st</sup>. A first-winter bird was present on October 7<sup>th</sup>.

**Black-headed Gull** *Larus ridibundus*

**15000** 24-12-93

*An abundant autumn and winter visitor but scarce in breeding season.*

J	F	M	A	M	J	J	A	S	O	N	D
9000	6500	5000	280	5	15	475	1550	4300	7800	8500	9000

The first juvenile of the summer occurred on June 27<sup>th</sup>.

**Common Gull** *Larus canus*

**304** 9-1-96

*A winter visitor and passage migrant.*

J	F	M	A	M	J	J	A	S	O	N	D
30	30	20	20	1	1	1	0	0	15	25	30

**Lesser Black-backed Gull** *Larus fuscus graellsii*

**4200** 11-10-02

*An abundant passage migrant and winter visitor.*

J	F	M	A	M	J	J	A	S	O	N	D
600	1150	900	400	2	225	480	1600	2100	2300	2400	125

The usual mid-winter dip in roosting birds again occurred with only around 80 in mid December, several of which were probably *L. f. intermedius*.

## Herring Gull *Larus argentatus*

3500 21-1-73

*An abundant winter visitor.*

J	F	M	A	M	J	J	A	S	O	N	D
2500	250	60	8	2	0	1	2	20	250	800	2900

The mid-winter peak in roosting birds was both typical and pronounced during both winter periods. A small, pale, adult plumaged bird but with a pinkish bill and sub-terminal dark spot was regularly present from early January to March 16<sup>th</sup> and again on September 19<sup>th</sup> and 22<sup>nd</sup>. It often frequented the pier and dam, fed with Black-headed Gulls and was presumed to be the cause for one or two claims of Ring-billed Gull.

A very large, dark mantled and flesh legged bird occurred on December 24<sup>th</sup>. It was as bulky as a Great Black-backed Gull and only a little smaller, yet the tone of grey was only a shade paler than *L.f. graellsii*. It had a hefty yellow bill with a red spot and black sub-terminal band. Its head was mainly white with light streaks on the nape. The outer four primaries were black to the coverts with small white tips and small mirrors on the outer one or two. It contrasted greatly with all other Herring Gulls.

## Western Yellow-legged Gull *Larus argentatus michahellis*

94, 95, 96, 97, 98, 99, 00, 01, 02, 03

6 5-11-92 & 29-10-99

*A regular winter visitor and passage migrant.*

J	F	M	A	M	J	J	A	S	O	N	D
1	0	2	1	0	0	2	4	1	3	3	1

A third-year roosted from March 7<sup>th</sup> to 9<sup>th</sup> (PJ) and an adult and first year on the 10<sup>th</sup> (GE). On July 3<sup>rd</sup> an adult on the ski ramp was dominant over the several accompanying Lesser Black-backs (GE). On July 16<sup>th</sup> one moulting adult was present (also on the 20<sup>th</sup>) along with a juvenile and a possible adult (GE). Two adults on August 7<sup>th</sup> were joined by another adult and a third-year bird in the roost (GE) and all but one of the adults were present the next day (GE). An adult occurred on the 16<sup>th</sup> (GE) and 18<sup>th</sup> when a third-year was also present (GE).

A first-winter bird was present on October 1<sup>st</sup> and 8<sup>th</sup> (GE), an adult on the 20<sup>th</sup>, two on the 22<sup>nd</sup>, three on the 28<sup>th</sup> and November 3<sup>rd</sup>. Single adults roosted on December 8<sup>th</sup> and 9<sup>th</sup>.

## Iceland Gull *Larus glaucoides*

71-93 94, 95, 96, 97, 98, 99, 00, 01, 02, 03

4 8/10-2-84

*A regular winter visitor and spring passage migrant in very small numbers.*

A third-winter bird roosted on January 24<sup>th</sup>, February 12<sup>th</sup> and 13<sup>th</sup> (PJ).

## Great Black-backed Gull *Larus marinus*

570 6-1-96

*An increasingly common winter visitor.*

J	F	M	A	M	J	J	A	S	O	N	D
300	10	15	2	0	0	0	2	2	20	60	560

**Sandwich Tern** *Sterna sandvicensis*

52, 57, 58, 69, 70, 73, 74, 76, 77, 79, 80, 83, 84, 85, 86, 88, 89, 92, 93, **97, 98, 99, 01, 03**

**29** 22-8-93

*A scarce passage migrant.*

Singles were present on May 16<sup>th</sup> and August 27<sup>th</sup>.

**Common Tern** *Sterna hirundo*

**74** 30-8-85

*A regular passage migrant and prospecting breeder. Bred successfully in 1993.*

J	F	M	A	M	J	J	A	S	O	N	D
0	0	0	7	8	4	8	4	1	1	0	0

The first juvenile of the summer appeared with an adult on June 29<sup>th</sup>. A first-winter bird was present from October 9<sup>th</sup> to 11<sup>th</sup>.

**Arctic Tern** *Sterna paradisaea*

**94, 95, 96, 97, 98, 99, 00, 01, 02, 03**

**520** 2-5-83

*A regular passage migrant especially from late April to mid May when passage can be quite dramatic.*

Only small numbers were noted this year. Three occurred on April 25<sup>th</sup>, one on May 22<sup>nd</sup> and four on the 23<sup>rd</sup>. A first-winter bird was present on October 4<sup>th</sup> and possibly 7<sup>th</sup> but some confusion was caused by the occurrence of the first-winter Common Tern around this time.

**Little Tern** *Sterna albifrons*

52, 57, 58, 70, 71, 73, 74, 76, 79, 80, 81, 82, 83, 84, 85, 86, 87, 91, 92, **98, 99, 01, 02, 03**

**4** 6-6-09

*A scarce passage migrant. After a period of five blank years it has now occurred in five of the last six.*

One was present for most of the day on May 23<sup>rd</sup> (GW et al).

**Black Tern** *Chlidonias niger*

**94, 95, 96, 97, 98, 99, 00, 01, 02, 03**

**89** 2-5-90

*A regular passage migrant usually seen in May, August or September.*

One was present on April 15<sup>th</sup> and 16<sup>th</sup>, two on May 16<sup>th</sup> and one juvenile on September 5<sup>th</sup>.

**Rock Dove** *Columba livia*

**90** 16-1-99

*It is frequently unclear whether records refer to truly feral birds, roaming local fancies or resting racers/homers but the Highfield Farm area appears to be supporting increasingly large numbers of apparently independent and wary birds.*

No large numbers were noted this year.

**Stock Dove** *Columba oenas*

**42** 11-11-01

*A regular non-breeding resident, mainly seen in Highfield Farm and around Willow Vale. National increase of 108% (1970-98).*

J	F	M	A	M	J	J	A	S	O	N	D
2	2	2	4	21	8	5	1	1	20	13	6

A pair nested in a sycamore at the north end of the dam.

**Wood Pigeon** *Columba palumbus*

**3000** 14-1-67

*An increasingly common resident breeder in the scrub woodland. National increase of 88% (1970-98).*

Maxima counts were 200 in March and 500 at Cuckoo Bank in October.

**Collared Dove** *Streptopelia decaocto*

**34** 9-10-99

*A common resident especially in the Highfield Farm-Pool Road area. National increase of 638% (1970-98).*

**Common Cuckoo** *Cuculus canorus*

**7** 24-4-88

*A regular passage migrant and breeder with Meadow Pipit and Dunnock probably the most frequent host parents. Has declined significantly in recent years. National decline of 31% (1970-98).*

First recorded on April 26<sup>th</sup> with up to two frequently recorded until June 7<sup>th</sup>.

One or two also seen at Cuckoo Bank in April and May.

**Long-eared Owl** *Asio otus*

72, 74, 75, 76, 78, 83, 86, 87, **99, 00, 01, 02, 03**

**4** 5-1-80

*A scarce and very irregular winter visitor.*

One was present on October 11<sup>th</sup> and 15<sup>th</sup> but heathland management work disturbed its roost area and it was not relocated.

**Short-eared Owl** *Asio flammeus*

49, 51, 55, 59, 65, 66, 67, 69, 73, 74, 78, 79, 81, 83, 85, 86, 88, 89, 90, 91, 92, **95, 96, 98, 99, 00, 01, 02, 03**

**4** 3/4-79 & 15-3-86

**5** 9/12-88 (CB)

*A fairly regular winter visitor to the heathland and grassland areas. One was on the north heath on March 2<sup>nd</sup>, 5<sup>th</sup> and 28<sup>th</sup>.*

**Common Swift** *Apus apus*

**1000** 6-72, 5-75 & 5-77

*A common summer visitor usually present between late April and mid September.*

*First recorded on April 24<sup>th</sup> with numbers increasing quickly to 500 by May 2<sup>nd</sup>. The last record was on September 1<sup>st</sup> when six were present.*

**Common Kingfisher** *Alcedo atthis*

**18:46** 94, 95, 96, 97, 98, 99, 00, 01, 02, 03

**4** 29-08-03

*A regular autumn visitor with probable local breeding in recent years.*

J	F	M	A	M	J	J	A	S	O	N	D
1	1	1	2	1	1	2	4	2	2	1	2

*Recorded throughout the year with most breeding season sightings in the dam and canal areas but the actual nest site was not found. Three juveniles were on the dam on August 27<sup>th</sup> and four birds were noted on the 29<sup>th</sup>.*

**Green Woodpecker** *Picus viridis*

**6** 24-9-00

*Two or three pairs are usually resident in the area. National increase of 90% (1970-98).*

J	F	M	A	M	J	J	A	S	O	N	D
1	1	2	X	X	X	4	X	X	3	1	2

*A pair nested near the motorway canal bridge and potential breeding activity was noted at Jack's Wood, near Fly Pool, West Shore Copse and Crane Brook Heath areas.*

**Great Spotted Woodpecker** *Dendrocopos major*

**3** 7-96

*Frequently nests in the Jack's Wood and Biddulph's Pool areas. National increase of 102% (1970-98).*

J	F	M	A	M	J	J	A	S	O	N	D
1	2	2	1	1	1	1	1	1	2	1	2

*A pair at least attempted to nest in Jack's Wood and others were also noted near Biddulph's Pool and at No Man's Bank during the breeding season.*

**Sky Lark** *Alauda arvensis*

**320** 17-3-79

A formerly common breeder that is very much in decline nationally as well as locally. National decline of 52% (1970-98) and 12% (1993-98) as a breeding bird.

J	F	M	A	M	J	J	A	S	O	N	D
X	1	X	X	X	2	X	2	1	4	20	12

Single pairs were present at Highfield Farm and Norton Bog but several other pairs were on Cuckoo Bank where 30 were counted in March.

**Sand Martin** *Riparia riparia*

**2000** 8-early 50's

A regular summer migrant nesting in the Wharf Lane Sand Quarry. Usually first recorded during the last week of March and departing by the end of September.

J	F	M	A	M	J	J	A	S	O	N	D
		85	200	X	X	X	50	X			

First recorded on March 22<sup>nd</sup>. Due to motorway construction only the northern end of the sand quarry remained but no survey was made on the Sand Martin colony had failed. The last record was on September 23<sup>rd</sup>.

**Barn Swallow** *Hirundo rustica*

**7000** 29-9-80

A common summer migrant usually present between early April and mid October.

J	F	M	A	M	J	J	A	S	O	N	D
			50	X	X	X	X	X		1	

First recorded on April 9<sup>th</sup>. At least one pair nested at Highfield Farm. An exceptionally late adult bird flew over the west shore on November 30<sup>th</sup> (GE, CM, AS).

**House Martin** *Delichon urbica*

**300** 24-5-94

A common summer migrant usually present between early April and mid October. Small breeding colonies exist near the White Horse pub and in Brownhills West.

J	F	M	A	M	J	J	A	S	O	N	D
			15	X	X	X	100	150	2		

**Tree Pipit** *Anthus trivialis*

**97, 98, 00, 01, 03**

**20** per hour 26-8-51

An infrequent passage migrant despite breeding in good numbers on Cannock Chase. National decline of 77% (1970-98).

One was heard calling as it passed over on August 31<sup>st</sup>.

**Meadow Pipit** *Anthus pratensis*

**300** 18-9-69

*Small numbers breed on the heathland and numbers are usually boosted by passage birds during early spring and the autumn.*

J	F	M	A	M	J	J	A	S	O	N	D
X	X	X	12	6	3	X	4	24	X	X	X

No large gatherings noted this year. Three or four pairs were present in the breeding season; on the Raceway Heath, Eastern Heath (possibly two pairs) and North Shore Heath.

**Rock Pipit** *Anthus petrosus*

32:46 **95, 96, 98, 99, 00, 01, 02, 03**

**4** 28-9-02

*A fairly regular spring and particularly autumn passage migrant.*

One on September 29<sup>th</sup>. Two were present on October 16<sup>th</sup> and one on the 17<sup>th</sup>.

**Water Pipit** *Anthus spinoletta*

69, 70, 71, 72, 73, 74, 75, 76, 77, 83, 85, 86, **95, 96, 03**

**5** 29-1-72

*An infrequent passage migrant and rare winter visitor.*

One was present with two Rock Pipits on October 16<sup>th</sup> and 17<sup>th</sup> (GW) and noted again on November 6<sup>th</sup>.

**Yellow Wagtail** *Motacilla flava*

**300** 26-8-51

*A regular summer migrant in varying numbers with one or two pairs sometimes stopping to nest. Usually seen from early April to the end of September. National decline of 31% (1970-98).*

J	F	M	A	M	J	J	A	S	O	N	D
			5	1	0	0	1	1			

First recorded on April 14<sup>th</sup> with five present on the 25<sup>th</sup>. The last record was of one on September 17<sup>th</sup>.

**Grey Wagtail** *Motacilla cinerea*

**7** 4-9-79

*A regular visitor during the autumn and winter. Breeding season records are on the increase despite a national decline of 48% (1970-98).*

J	F	M	A	M	J	J	A	S	O	N	D
1	2	1	3	2	0	1	1	3	2	2	3

A pair was present around the dam during late April and one was present on May 11<sup>th</sup>.

**Pied Wagtail** *Motacilla alba yarrellii*

**211** 27-11-89

*A resident breeder with larger numbers in the autumn and winter.*

J	F	M	A	M	J	J	A	S	O	N	D
X	X	X	14	X	X	X	X	26	X	X	X

A partial survey showed probable breeding at the Powerboat Club, Sailing Club and south shore.

There were no records of the nominate race (White Wagtail) this year.

**Wren** *Troglodytes troglodytes*

**16** 12-10-85

*A common resident in a wide range of habitats. Its powerful song and sharp alarm calls betray its presence, where otherwise it would be rarely seen.*

A partial survey showed it to be a common breeder in all habitats providing the slightest cover..

**Dunnock** *Prunella modularis*

**13** 11-12-82

*A common but skulking resident that is far more frequently heard than seen. National decline of 44% (1970-98).*

A partial survey showed it to be a common breeder in woodland edge and scrub habitats.

**Robin** *Erithacus rubecula*

**52** 12-10-85

*A common resident, especially in the areas of scrub and woodland. During the autumn its song is commonly heard as individuals set up winter territories.*

A partial survey showed it to be a common breeder in all areas of suitable habitat.

**Common Stonechat** *Saxicola torquata*

26:46 **96, 99, 00, 01, 02, 03**

**4** 11/12-75 & 5-3-02

**15** 27-10-01 **(CB)**

*Now showing signs of a good recovery after being very scarce during the nineties. Bred in 1975. It is finding the restored heathland on Cuckoo Bank very attractive.*

One was noted in March but most records came from Cuckoo Bank.

Monthly maxima at Cuckoo Bank:

J	F	M	A	M	J	J	A	S	O	N	D
3	6								7	2	2

**Northern Wheatear** *Oenanthe oenanthe*

**25** 12-8-57

*A regular passage migrant in small numbers usually from mid March to late May and mid August to early October. Occasionally birds showing the characteristics of the Greenland race are recorded.*

J	F	M	A	M	J	J	A	S	O	N	D
		1		1			1	1			

The first record was of one at Cuckoo Bank on March 23<sup>rd</sup>. One was on the south shore on May 23<sup>rd</sup> and 24<sup>th</sup> with singles on August 29<sup>th</sup> and September 1<sup>st</sup>.

**Ring Ouzel** *Turdus torquatus*

54, 76, 86, 88, 90

2 5/9-11-76 & 17-4-88

1 19/20-10-03 **(CB)**

*A very infrequent passage migrant.*

One was present in a hawthorn hedge near Biddulph's Pool on October 19<sup>th</sup> and 20<sup>th</sup>.

**Blackbird** *Turdus merula*

60 1-10-83

*A common resident particularly in areas of scrub, woodland and garden.*

A partial survey showed it to be a common breeder in all areas of suitable habitat.

**Fieldfare** *Turdus pilaris*

>1000 7-11-98

*A regular winter visitor usually between mid October and mid April. It finds the hawthorn hedges around the Crane Brook fields particularly attractive and it frequently roosts below the dam.*

J	F	M	A	M	J	J	A	S	O	N	D
X	X	20	1						15	30	X

First noted on October 14<sup>th</sup> and small numbers were recorded throughout the winter until the last on April 13<sup>th</sup>.

**Song Thrush** *Turdus philomelos*

25 31-10-84

*Formerly quite common in the wooded and garden areas but it appears to be in decline locally as well as nationally. National decline of 59% (1970-98) and 5% (1993-98) as a breeding bird.*

Nine territories were held during the breeding season but it appeared to be very scarce during the winter months and only one was recorded in December.

**Redwing** *Turdus iliacus*

450 6-1-70

*A common winter visitor, its contact call can often be heard at night as flocks pass over on migration. Usually first recorded in mid October and the last birds depart by early April.*

J	F	M	A	M	J	J	A	S	O	N	D
30	X	70							3	10	X

First recorded on October 1<sup>st</sup> and the last bird in the spring was on March 22<sup>nd</sup>.

**Mistle Thrush** *Turdus viscivorus*

**37** 11-8-87

*A poorly recorded species but it is usually present in the more maturely wooded areas. Small flocks can sometimes be seen in the autumn.*

J	F	M	A	M	J	J	A	S	O	N	D
X	2	3	X	3	8	X	X	6	3	X	2

Up to four breeding pair: Southacres Farm, Rugby Club, Jack's Wood and Vicarage with birds from Brownhills Common frequently using Highfield Farm to feed.

**Grasshopper Warbler** *Locustella naevia*

**6** 23-5-97 **94, 95, 96, 97, 98, 00, 01, 02, 03**

*This secretive summer migrant is best found by listening for its distinctive, monotonous, 'reeling' song particularly at dusk from late April through to August.*

J	F	M	A	M	J	J	A	S	O	N	D
			1	1	1	1					

First noted on April 26<sup>th</sup>. Two territories were held; one on the north heath and one below the dam.

**Sedge Warbler** *Acrocephalus schoenobaenus*

**5** 1-8-84 **94, 95, 96, 97, 99, 00, 01, 02, 03**

*A scarce passage migrant and now only an irregular breeder.*

Only three records of spring passage birds with the first on April 26<sup>th</sup>.

**Reed Warbler** *Acrocephalus scirpaceus*

**15** 6-03

*A regular migrant breeder, usually arriving in early May and departing by mid September. National increase of 114% (1970-98).*

J	F	M	A	M	J	J	A	S	O	N	D
			2	5	15	X	X				

First recorded on April 29<sup>th</sup>. At least 11 singing birds were located in the Slurry Pool/Norton Bog reed beds, two in the Overflow reed bed and singles at Plant Swag and Fly Pool.

**Lesser Whitethroat** *Sylvia curruca*

**10** 5-9-72

*A regular passage migrant and frequent breeder usually arriving in late April and departing by mid September.*

J	F	M	A	M	J	J	A	S	O	N	D
			1	1	2	1		1			

First recorded on April 26<sup>th</sup>. Two territories were located in June; one north of the canal and the other in the Highfield Farm scrub. The last record was on September 3<sup>rd</sup>.

**Common Whitethroat** *Sylvia communis*

**44** 6-03

*A common migrant breeder usually present from mid April to mid September.*

J	F	M	A	M	J	J	A	S	O	N	D
			1	X	44	X	X	2			

First recorded on April 16<sup>th</sup>. A remarkable 44 territories were present during June; all but one were south of the Slurry Pool. Open hawthorn and bramble scrub, like Church Street Open Space and north of the canal, is the preferred habitat. Denser areas, like north of Fly Pool, held far fewer birds. The last record was on September 19<sup>th</sup>.

**Garden Warbler** *Sylvia borin*

**12** 6-03

*An increasingly frequent migrant breeder, usually from late April to early September.*

J	F	M	A	M	J	J	A	S	O	N	D
			2	7	12	X	X				

12 evenly distributed territories were located during June compared with 20 Blackcap territories.

**Blackcap** *Sylvia atricapilla*

winter records 87, **96, 01**

**20** 6-03

*A fairly common migrant breeder usually present from early April to the start of October and there have been one or two records of presumed migrants from central Europe during recent winters. National increase of 104% (1970-98) as a breeding bird.*

J	F	M	A	M	J	J	A	S	O	N	D
			2	X	20	X	X	X	2		

First recorded on April 5<sup>th</sup>. 20 territories were located during the breeding season, very much mirroring the distribution pattern shown by the Common Chiffchaff. The last record was of two on October 3<sup>rd</sup>. There were no winter records this year.

**Common Chiffchaff** *Phylloscopus collybita*

winter records 78, 92, **94, 95, 96, 97, 98, 99, 01, 02, 03**

winter maximum **3** 2-1-78

**23** 25-9-99

A common passage migrant with two or three pairs breeding in the more wooded areas. Usually present from late March to early October but winter records are now regular.

J	F	M	A	M	J	J	A	S	O	N	D
1	1	8	X	X	16	X	X	8	2	2	1

16 territories were located during the breeding season with half of these being in the belt of more mature woodland between Church Street Open Space south to the canal.

**Willow Warbler** *Phylloscopus trochilus*

**85** 6-8-84

An abundant migrant breeder usually arriving in early April and return passage being noted from mid-July with the last records usually in mid September. National decline of 37% (1970-98).

J	F	M	A	M	J	J	A	S	O	N	D
			6	X	40	X	X	2			

40 territories were recorded during the breeding season with particular concentrations in the damp scrub areas of the north shore.

**Goldcrest** *Regulus regulus*

**12** 29-12-74 & 12-03

Occasionally recorded in the breeding season at Biddulph's Pool and Jack's Wood but more commonly seen in late autumn when local populations are increased by immigrants from Scandinavia.

J	F	M	A	M	J	J	A	S	O	N	D
X	2	2	1	1		1	1	3	5	X	12

Probably nested in Jack's Wood but they were very hard to locate in mid-summer. Good numbers were present at the end of the year.

**Spotted Flycatcher** *Muscicapa striata*

**94, 95, 96, 97, 98, 99, 00, 02, 03**

**6** 29-5-71 & 22-8-83

A declining passage migrant and former breeder usually arriving in early May and departing by mid September. National decline of 78% (1970-98) and 10% (1993-98).

One was present on September 3<sup>rd</sup>.

**Long-tailed Tit** *Aegithalos caudatus*

**40** 27-05-03

An increasing resident breeder.

J	F	M	A	M	J	J	A	S	O	N	D
X	X	X	X	40	X	X	X	22	X	X	30

Several pairs bred. Two parties totalling about 40 birds on May 27<sup>th</sup> was probably only a small proportion of the overall total for the site.

**Willow Tit** *Parus montanus*

**19** 13-6-87

*There is clearly a strong local population of this declining species. National decline of 72% (1970-98).*

Although there was only one brood recorded, there were up to 12 territories held during the spring. A more detailed survey is needed to identify prime habitat and to guide future management.

**Coal Tit** *Parus ater*

**11** 12-6-87

*Usually breeds at Biddulph's Pool and possibly in Jack's Wood otherwise it is rather infrequently recorded and mainly in the winter months.*

J	F	M	A	M	J	J	A	S	O	N	D
X	X	X	1	2	3	1	1	3	2	2	2

Probably bred in Jack's Wood.

**Blue Tit** *Parus caeruleus*

**136** 13-6-87

*A common resident with up to 20 pairs nesting.*

A partial survey indicated a continuation of its status as a common breeder.

**Great Tit** *Parus major*

**30** 13-6-87

*A common resident breeder.*

A partial survey indicated a continuation of its status as a common breeder.

**Eurasian Nuthatch** *Sitta europaea*

84, 88, 93, **97, 99, 00, 01, 02, 03**

**11** 1-6-02

*Formerly very infrequent but now appears to be resident in Jack's Wood. Successfully bred in 2002.*

J	F	M	A	M	J	J	A	S	O	N	D
1	1	2	2	2	3	2	2	1	2	3	2

Nested in Jack's Wood again; three in June may indicate some success.

**Eurasian Treecreeper** *Certhia familiaris*

88, 90, **95, 96, 97, 98, 99, 00, 01, 02, 03**

**5** 20-5-00

*Although regularly noted at Biddulph's Pool, it was not until 2000 that a pair bred in the main recording area.*

Few records this year with singles noted in January and November.

At Biddulph's Pool there were records in February and March.

**Eurasian Jay** *Garrulus glandarius*

**15** 10-10-99

*A resident and autumn immigrant.*

Present in the breeding season below the dam, on the North Heath, West Shore and Church Street Open Space.

**Magpie** *Pica pica*

**59** 10-4-94

*A common resident. Several pairs nest and many roost below the dam and near Fly Pool during the winter. National increase of 102% (1970-98).*

J	F	M	A	M	J	J	A	S	O	N	D
30	X	X	X	X	X	X	X	X	50	40	30

A partial survey showed there to be a high density of breeding pairs wherever there are trees and scrub.

**Western Jackdaw** *Corvus monedula*

**46** 19-11-85

*Usually only seen flying over, especially in the autumn.*

J	F	M	A	M	J	J	A	S	O	N	D
2	1	1	1	4	2	0	5	2	2	2	1

**Rook** *Corvus frugilegus*

**400** 24-10-96 & 18-10-99

*Only ever recorded flying over the area.*

J	F	M	A	M	J	J	A	S	O	N	D
1	9	4	3	5	1	1	1	2	2	4	2

**Carrion Crow** *Corvus corone*

**70** 18-1-87

**191** 4-03 (CB)

*A resident breeder.*

Present throughout the year but breeding numbers were not surveyed.

191 were counted at Cuckoo Bank in April.

**Common Starling** *Sturnus vulgaris*

**3700** 20-6-02

*A common resident but showing signs of a decrease in local breeding. National decline of 65% (1970-98) as a breeding bird.*

J	F	M	A	M	J	J	A	S	O	N	D
X	X	20	50	80	100	50	200	80	100	200	X

During June a roost developed again on the island but numbers were not systematically counted and may have been considerably higher than tabulated.

**House Sparrow** *Passer domesticus*

**450** 1& 12-68

*A resident breeder but only common around habitation. National decline of 43% (1970-98).*

40 were at Highfield Farm on August 17<sup>th</sup>.

**Chaffinch** *Fringilla coelebs*

**250** 26-12-99

*Breeding numbers have increased in recent years, especially where there are mature trees such as Jack's Wood and the Vicarage Gardens.*

*A partial survey showed it to be a common breeder wherever there are mature trees. Ninety were in Highfield Farm on November 30<sup>th</sup>.*

**Brambling** *Fringilla montifringilla*

**440** 23-2-76

*A fairly regular passage migrant and winter visitor in very variable numbers.*

*One flew over on November 16<sup>th</sup> and one was with Chaffinches at Highfield Farm on December 9<sup>th</sup>.*

**Greenfinch** *Cardulis chloris*

**400** 21-11-54 & 2-12-67

*A resident breeder mainly noted around the garden areas to the south-west and around the dam.*

At least 15 breeding territories were located in June.

**Goldfinch** *Carduelis carduelis*

**60** 27-9-76

*One or two pairs are usually present during the breeding season but highest numbers are frequently noted in the autumn and fewer during the winter.*

J	F	M	A	M	J	J	A	S	O	N	D
X	6	X	3	2	3	3	30	X	3	6	4

Up to three territories were being held in June. Eleven by the canal on August 17<sup>th</sup> and 24 by Norton Lakeside station on the 18<sup>th</sup>.

**Siskin** *Carduelis spinus*

**200** 29-12-88

*A regular winter migrant in varying numbers and with an increasing tendency to occur during late summer indicating possible local post breeding movements.*

J	F	M	A	M	J	J	A	S	O	N	D
X	X	15	1					30	7	12	0

The first of the autumn was on September 3<sup>rd</sup>. None could be found at the end of the year.

**Linnet** *Carduelis cannabina*

**>250** 3-9-84 & 6-10-86

*A fairly common resident breeder, nesting mainly in the areas of gorse and occurring in small flocks during the autumn, especially on the south shore. National decline of 54% (1970-98) and 13% (1993-98) as a breeding bird.*

J	F	M	A	M	J	J	A	S	O	N	D
60	24	X	40	X	7	X	40	150	X	100	100

About seven pairs nested; two at the Raceway Heath, one at Highfield Farm, two north of the canal and two or three in the north-shore gorse. 150 were present on the motorway embankment on September 1<sup>st</sup> with around 100 still present during November and early December.

**Lesser Redpoll** *Carduelis cabaret*

**800** mid 12-00

*Now only a former breeder but quite common during the winter. National decline of 93% (1970-98) as a breeding bird.*

J	F	M	A	M	J	J	A	S	O	N	D
70	X	X							40	X	5

No records between April and September but good numbers present during the winter months.

**Common Redpoll** *Carduelis flammea*

**87, 95, 96, 97, 02, 03**

**100** 25-3-96

*A very scarce and irregular winter visitor.*

Twelve were recorded near the main entrance on February 1<sup>st</sup> (GW).

**Bullfinch** *Pyrrhula pyrrhula*

**20** 13-10-88

*A resident breeder that is far more often heard than seen as it tends to keep to the more dense bushy areas to the north and on the dam. National decline of 52% (1970-98) and 10% (1993-98).*

J	F	M	A	M	J	J	A	S	O	N	D
8	X	10	X	X	9	X	X	X	X	X	6

Up to nine pairs were present in the breeding season. Four birds on December 29<sup>th</sup> appeared very large and bulky and could have been of the northern race *P. p. pyrrhula* (GE).

**Yellowhammer** *Emberiza citrinella*

**200** 30-12-00

*A fairly common resident breeder especially where there are hedgerows or bushes surrounded by open heath or fields. National decline of 54% (1970-98).*

About eight pairs bred; two or three at the Raceway Heath, one north of the canal, one by the sailing club, one at Crane Brook Heath and two along Hednesford Road. Very few were present during the winter.

**Reed Bunting** *Emberiza schoeniclus*

**60** 24-9-73

*A fairly common resident breeder. National decline of 54% (1970-98) and 25% (1993-98).*

Twenty pairs were located during the breeding season. A common visitor to the feeding station during the winter; up to 13 feeding on the table at a time.

**Corn Bunting** *Miliaria calandra*

**96, 97, 98, 99, 00, 01, 03**

**39** 19-2-85 & 28-2-88

*A nationally declining species that probably still regularly winters in Highfield Farm and breeds in small numbers in the Hammerwich area. National decline of 85% (1970-98) and 30% (1993-98).*

The only record was of one below the dam on August 27<sup>th</sup>.